



DigitaceTM
aligners

Smile With Ease





What is **Digitace Aligners**

Digitace Aligners represent a breakthrough in orthodontic treatment, offering a modern and innovative approach to straightening teeth. Crafted from advanced materials, these virtually invisible aligners are custom-made to fit snugly over your teeth, gently guiding them into their ideal position. Say goodbye to traditional metal braces and embrace the convenience and confidence of Digitace Aligners.

Advantages of Digitace Aligners



Enhanced Aesthetics

Digitace Aligners are virtually invisible, allowing you to straighten your teeth discreetly. Say goodbye to metal brackets and wires, and embrace a more confident smile throughout your treatment.



Comfortable and Convenient

Digitace Aligners are custom-made to fit your teeth snugly, providing a comfortable and irritation-free orthodontic experience. They are removable, allowing you to maintain proper oral hygiene, enjoy your favorite foods, and participate in activities without restrictions.



Precise and Predictable Results

With advanced digital planning and cutting-edge technology, Digitace Aligners offer precise tooth movement. Each set of aligners is designed to gradually shift your teeth into the desired position, ensuring predictable and reliable outcomes.



Shorter Treatment Time:

Digitace Aligners are designed to optimize treatment efficiency, helping you achieve your dream smile in a shorter period. Our innovative approach streamlines the orthodontic



Personalized Treatment

Digitace Aligners are tailored to address your unique orthodontic needs. Our experienced team works closely with you to create a personalized treatment plan, ensuring that every aspect of your smile transformation is considered.



Professional Guidance

Throughout your Digitace Aligners journey, you will be supported by skilled dental professionals who will monitor your progress and provide guidance at every stage. Their expertise ensures optimal treatment outcomes and a seamless experience.



How it Works



Consultation:

Your journey with Digitace Aligners begins with a comprehensive consultation with a dental professional. They will assess your dental health, discuss your smile goals, and determine if Digitace Aligners are the right solution for you.

Digital Scanning

Advanced digital scanning technology is used to capture precise 3D images of your teeth. This eliminates the need for messy traditional impressions and ensures accurate measurements for creating your custom aligners.



Treatment Planning

Using sophisticated software, your dental professional will create a detailed treatment plan. They will map out the precise movements of your teeth, showcasing the step-by-step transformation towards your desired smile.



Custom Aligners

You will wear each set of aligners for a specified period, typically around two weeks, before progressing to the next set. The aligners should be worn for the recommended duration each day, allowing them to exert gentle pressure on your teeth to guide their movement.



Regular Check-ups

Throughout your treatment, you will have periodic check-ups with your dental professional. These visits are essential for monitoring your progress, making any necessary adjustments, and ensuring that your treatment is on track.



Progression and Refinements

As you progress through your aligner series, you will notice gradual improvements in your smile. In some cases, refinements may be necessary to achieve the desired results. Your dental professional will guide you through any additional steps required.



Retention

After completing your aligner treatment, a retention plan will be put in place to maintain the newly achieved alignment of your teeth. This may include the use of retainers or other orthodontic appliances as recommended by your dental professional.



Treatable Cases

Embark on your journey to a picture-perfect smile with Digitace aligners



Dental Crowding

Dental crowding is the misalignment of teeth within the arches, causing aesthetic, health, and functional problems if untreated. It results from various factors, affecting teeth positioning during jaw closure.



Dental Spacing

This dental issue involves gaps between teeth, particularly noticeable among upper front teeth, resulting from misalignment within arches. Variable in size and cause, it stems from multiple factors.



Midline Discrepancy

Misaligned teeth, especially concerning the dental midline—a dividing line between upper and lower jaws—cause asymmetry. This disparity results in an uneven smile and possible functional problems.



Openbite

Irregular teeth placement creates gaps between upper and lower teeth upon closure, affecting biting, aesthetics, and orthodontic issues due to inadequate contact during chewing.



Proclined Upper and Lower Teeth

Teeth tilting forward excessively results in crowding due to limited space in dental arches. Misalignment leads to aesthetic, functional, and oral health problems.



Proclined Upper Teeth

Upper teeth tilting forward create protrusion, causing bite problems like misalignment and overbite. These issues affect smile aesthetics and oral health function.

Frequently Asked Questions



How long does the treatment with

Treatment time can vary depending on individual cases. On average, treatment can range from several months to a year or more. Your dental professional will evaluate your specific needs and provide you with an estimated treatment duration.

Are Digitace Aligners comfortable

Yes, Digitace Aligners are designed for optimal comfort. Made from smooth, BPA-free plastic, they fit snugly over your teeth without causing irritation. Most people find them comfortable to wear and easily adapt to their daily routines.

Can I remove Digitace Aligners

Yes, one of the significant advantages of Digitace Aligners is their removability. You can take them out before eating, allowing you to enjoy your favourite foods without any restrictions. It is important to brush your teeth thoroughly before reinserting the aligners.

How often should I wear my Digitace

To achieve the best results, it is recommended to wear your Digitace Aligners for at least 20 to 22 hours a day. The aligners should be worn consistently, only removing them for eating, drinking (except water), brushing, and flossing.

Will Digitace Aligners affect my speech?

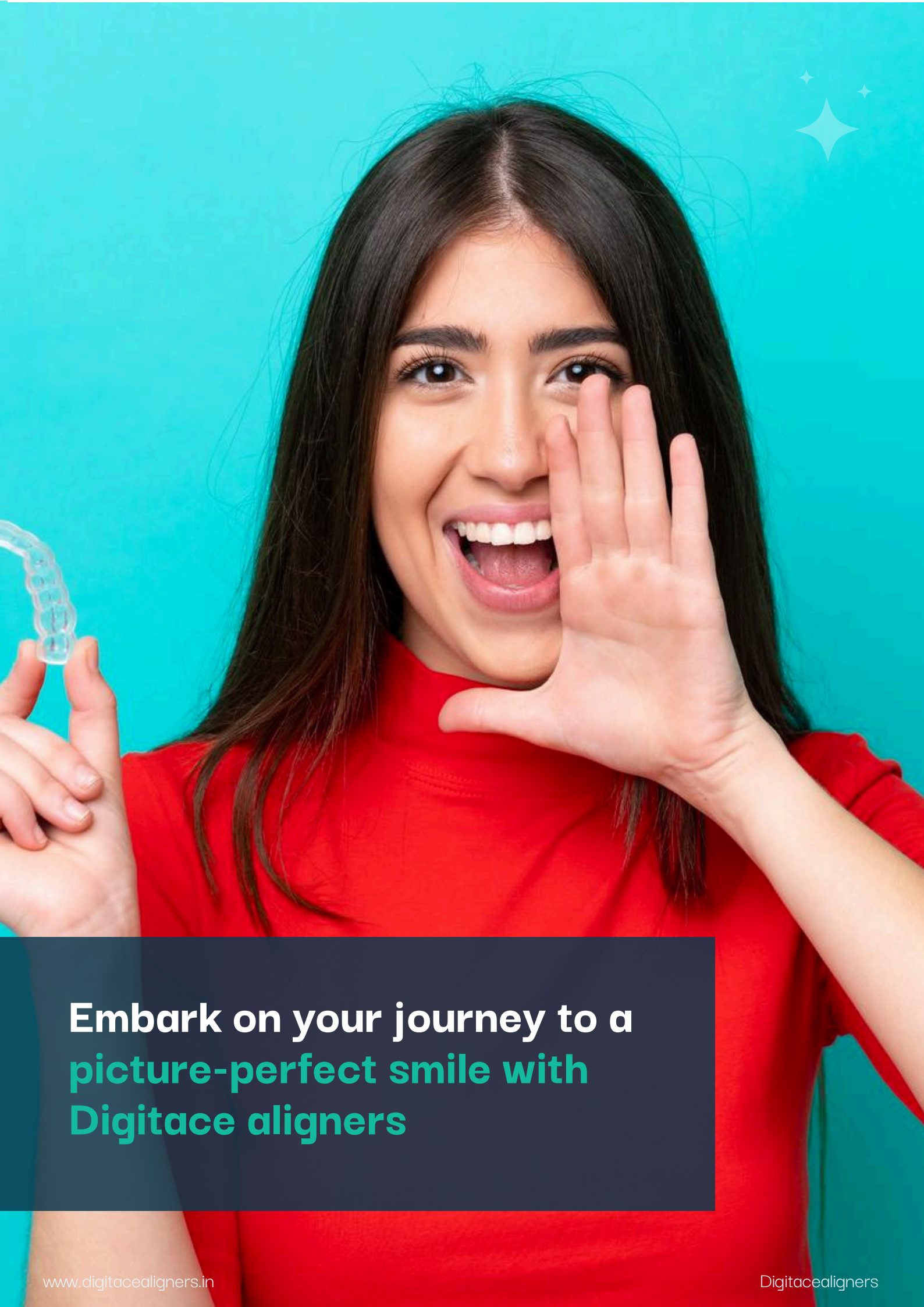
Initially, you may experience a slight adjustment period where your speech may be slightly affected. However, most people quickly adapt, and any changes in speech are typically minimal and temporary.

Are Digitace Aligners suitable for everyone?

Digitace Aligners are designed to treat a wide range of orthodontic concerns. However, each case is unique, and the suitability of aligner treatment depends on various factors. It is best to consult with a dental professional to determine if Digitace Aligners are right for you.

How do I clean my Digitace Aligners?

Cleaning your Digitace Aligners is simple. Gently brush them with a soft toothbrush and rinse them with lukewarm water. Avoid using hot water or abrasive cleaners, as they can damage the aligners. It is also important to maintain good oral hygiene by brushing and flossing your teeth regularly.



**Embark on your journey to a
picture-perfect smile with
Digitace aligners**



Contact us

Phone : +91 89433 55052 | +91 89219 65877

Web : www.digitacealigners.in

Mail : support@digitacealigners.in

Address : Digitace Dental Solutions Private Limited
68/1457a, Ground Floor, Tatapuram
Sukumaran Road, Ernakulam - 18

